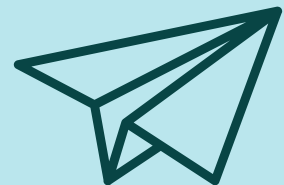


AUGUST 2021

Shaping Urban Air Mobility in Los Angeles through Community Engagement



AUGUST 2021

Shaping Urban Air Mobility in Los Angeles through Community Engagement

The Urban Air Mobility Partnership led by Urban Movement Labs (UML) brings together the Los Angeles Mayor's Office, the Los Angeles Department of Transportation (LADOT), the Los Angeles Department of City Planning, Regional and Federal agencies, and industry leaders to inform policy associated with Urban Air Mobility (UAM) services in Los Angeles. To ensure this process elevates community voices, UML has engaged with trusted community organizations from June through August

2021 to listen and understand concerns and opportunities related to improved mobility for all Angelenos. This first phase of engagement included a series of one-on-one interviews with key stakeholders and organizations and will culminate in a virtual outreach event and collaborative review of the Draft UAM Policy Toolkit prepared by the City of Los Angeles. This document provides a high-level summary of what we have heard to date from community organizations and stakeholders.



Exciting Opportunities



ELECTRIFICATION

With a vision of electric vertical takeoff and landing vehicles (eVTOL), UAM may further accelerate technology and electric grid improvements to support broader electrification of all mobility options. Additionally, electric aviation provides a solution to critical aviation-related impacts, such as safety, emissions, and noise.



A MULTI-MODAL CITY

Reducing vehicle miles traveled in Los Angeles will require shifts in travel modes and improved mobility options. UAM can be a catalyst of multi-modal transportation hubs that put people first by integrating safe and accessible infrastructure linking transit, walking, bicycling, and first/last mile mobility devices.



CARGO IN THE AIR

The freight movement industry can leverage UAM to transport goods and high-value cargo such as medical supplies while reducing the usage of delivery vehicles in communities. Planning for this capability ensures that it is available during an emergency when moving these valuable assets is critical to saving lives.

What Communities Want to See



1

COMMUNITY-FIRST APPROACH

A community-based planning process to guide the development of UAM services is imperative. When planning for the arrival of UAM, it is crucial for all parties to proactively work to ensure this new travel mode builds on the successes of prior public transportation investments rather than exacerbating well-documented impacts and inequities.

2

EQUITABLE PLANNING

We must prioritize equity to ensure UAM distributes its benefits to all communities for critical acceptance. For example, investments in and revenue generated by UAM operations should also improve the broader regional transportation network to enhance equitable mobility for all. UAM cannot be a tool that further divides communities in Los Angeles or adds new emissions and noise pollution to communities already burdened by the impacts of transportation infrastructure.

3

TRANSPORTATION INTEGRATION

The City must integrate UAM with other modes of transportation as a part of a larger transportation demand management strategy to reduce vehicle miles traveled and provide more diverse mode choice options.

4

PLANNING FOR DIVERSITY

Transportation services must address mobility needs beyond commute trips - including the travel patterns of people with disabilities, women, parents, students, and seniors.

5

ACKNOWLEDGE MAIN SOCIAL ISSUES IN LA

UAM planning must fully recognize existing social challenges systemically embedded by past transportation investments and decisions. How can the development of UAM infrastructure catalyze investments in some of Los Angeles' most pressing issues, such as transit infrastructure, pedestrian/bicyclist safety, housing, and homelessness?

Share your Thoughts and Stay Up to Date

The ideas and concerns raised by the community during UML's ongoing engagement work will inform a policy framework and toolkit for Urban Air Mobility that prioritizes equity, safety, sustainability, and accessibility. To stay up to date and share your thoughts, please follow us at urbanmovementlabs.com/uam or email us at:

info@urbanmovementlabs.com

Thank You!

Special thanks to all organizations and individuals who share feedback and guidance for effectively engaging community members in this effort.

UCLA Institute of Transportation Studies, Los Angeles Walks,
Los Angeles County Bicycle Coalition, Los Angeles Business Council

[Urban Air Mobility Website](#)

